



Annandale Road, London, W4 2HE

A nicely presented one bedroomed apartment situated in the very popular residential road just moments from Chiswick's Main High Road with its array of boutique shops and restaurant retailers includes M&S, Waitrose, Sainsbury & Tesco. The accommodation provides: open plan reception room with a galley style fitted kitchen, bedroom, and further study/occasional bedroom, fitted bathroom, wardrobes, entrance hall, gas fired central heating. Local transport links include both Turnham Green & Stamford Brook Tube stations, numerous local bus routes with convenient vehicular access via A4/M4 central London, Heathrow & The West. Hounslow Council Tax Band D. EPC-D. The property is offered part furnished and available 5th January

- Lovely central Chiswick Location
- Great for transport links
- Period conversion
- Open plan Living area with galley kitchen
- Main bedroom with fitted wardrobes
- Second occasional bedroom/study
- Fitted bathroom
- Available 21st October
- Part furnished

£1,750 Per Calendar Month

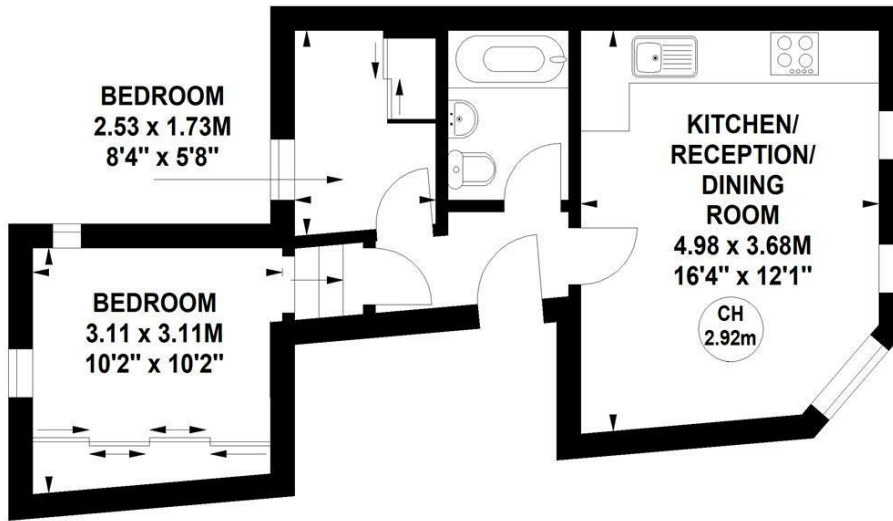
Annandale Road, W4

Approximate gross internal area

38.55 sq m / 415 sq ft

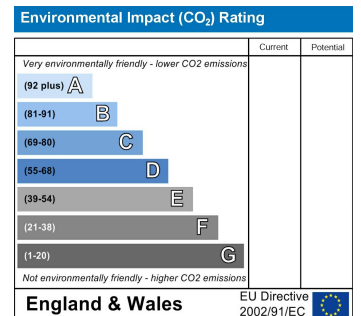
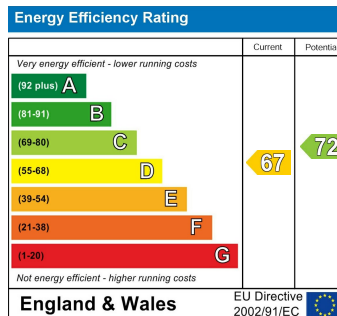


Key :
CH - Ceiling Height



First Floor

Not to scale, for guidance only and must not be relied upon as a statement of fact.
All measurements and areas are approximate only



5-7 Turnham Green Terrace, Chiswick, London, W4 1RG

Tel 020 8747 8800

E-mail lettings@whitmanandco.com

Website www.whitmanandco.com



MISREPRESENTATION ACT 1967

Whitman & Co. for themselves and for the vendors give notice that these particulars do not constitute any part of, an offer of contract. All statements contained in these particulars are made without responsibility on the part of Whitman & Co. or the vendor. None of the statements contained in these particulars is to be relied upon as statements or representations of facts. Any intending purchaser must satisfy himself by inspection or otherwise as to the correctness of each of the statements contained in these particulars. The vendor does not make or give, and neither Whitman & Co. or any person in their employment has any authority to make or give, any representation or warranty whatever in relation to the property.